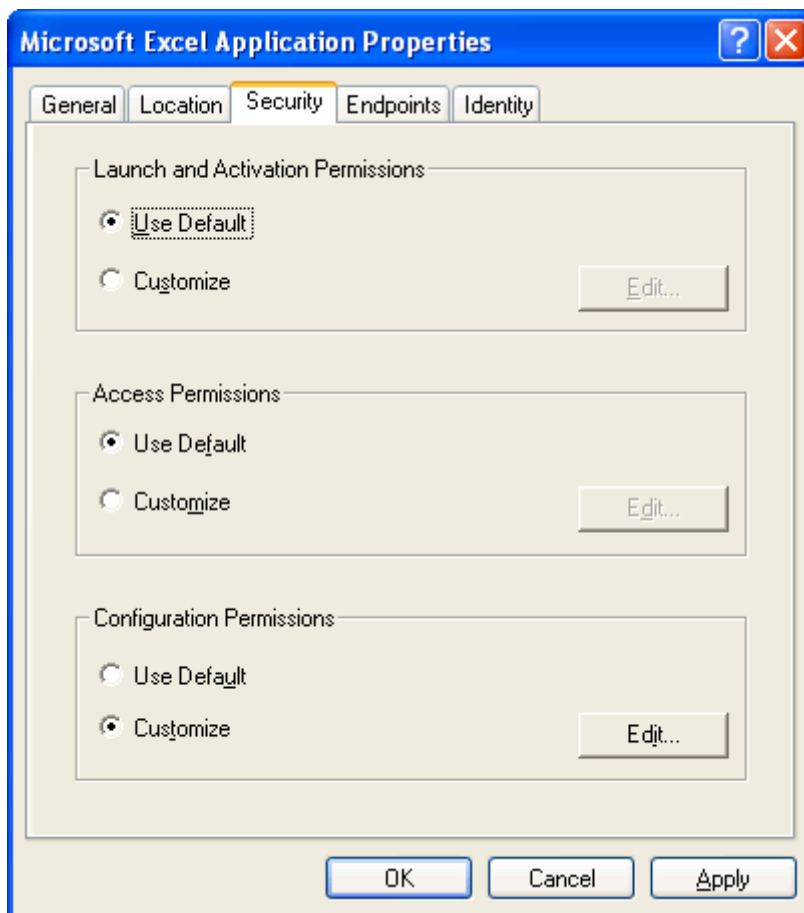


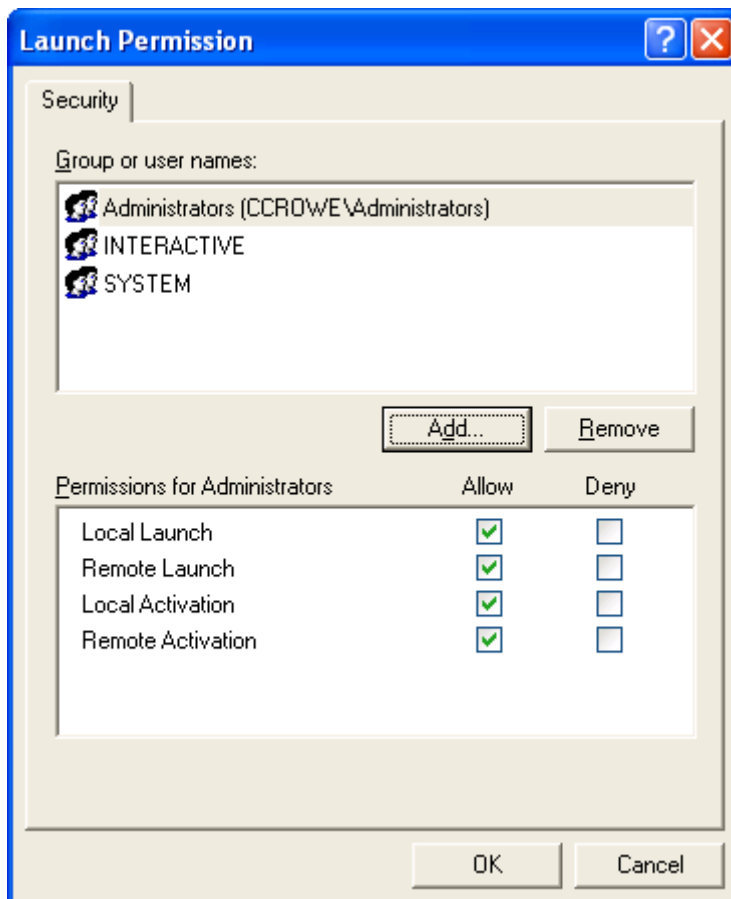
## Installation on Server (for ASP.NET) - conaito PPT2Flash SDK Configure DCOM

Among other things the conaito PPT2Flash SDK provides the sample ASP.NET. A successful conversion of your PowerPoint presentation on a Server requires also the following Server settings:

- Go to the Start-Run menu item.
- Type in "DCOMCNFG" and hit enter.
- This should load the "Component Services" MMC (you can also load from Administrative Tools - Component Services"
- Expand "Component Services"
- Expand "Computers"
- Expand "My Computer"
- Select the "DCOM Config" item
- Select the "Microsoft PowerPoint" item.
- Right click and select Properties
- Select the Security Tab and you should see the following:



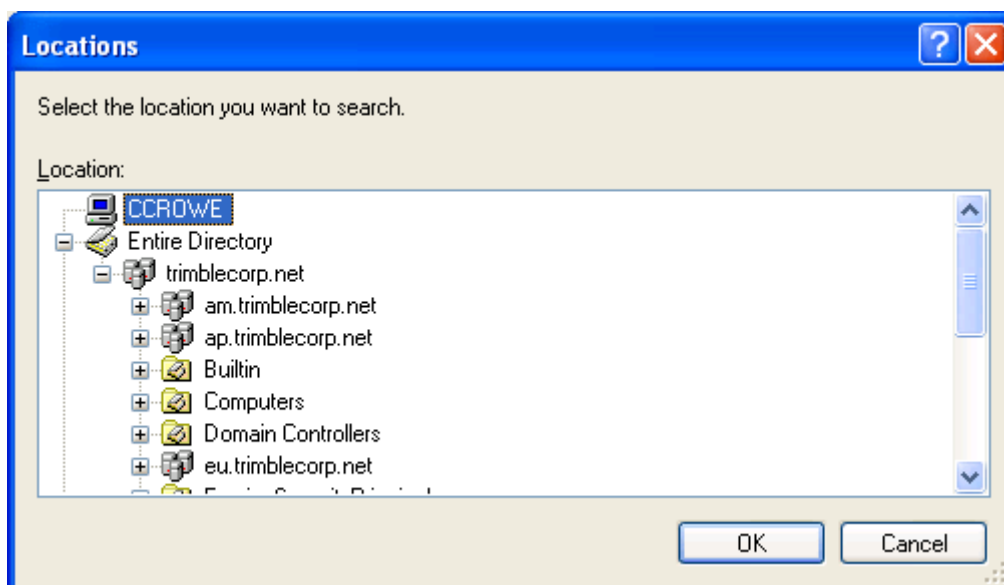
- Under "Launch and Activation Permissions" select the "Customize" option.
- Click the "Edit" button



- Click the "Add" button to add a new account to the list.
- On the dialog that is displayed click the Locations button

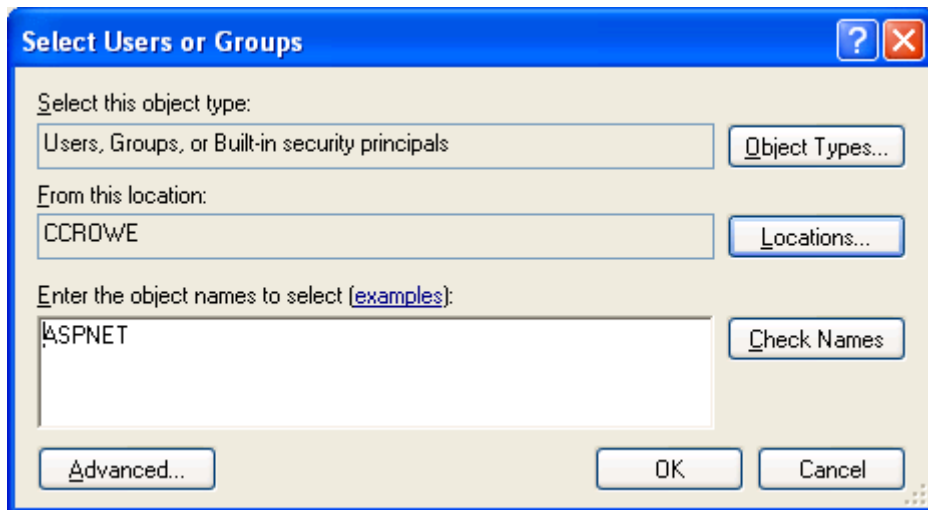
(this is because by default your domain will be selected and we need a local account)

In this dialog scroll the list to the top (sometimes the first item is not visible) but scroll to the top and select the first item which is your computer name. In the list below "CCROWE" is the name of my computer.



- Click the OK button

- On the dialog that is displayed enter "ASPNET" as the account name.

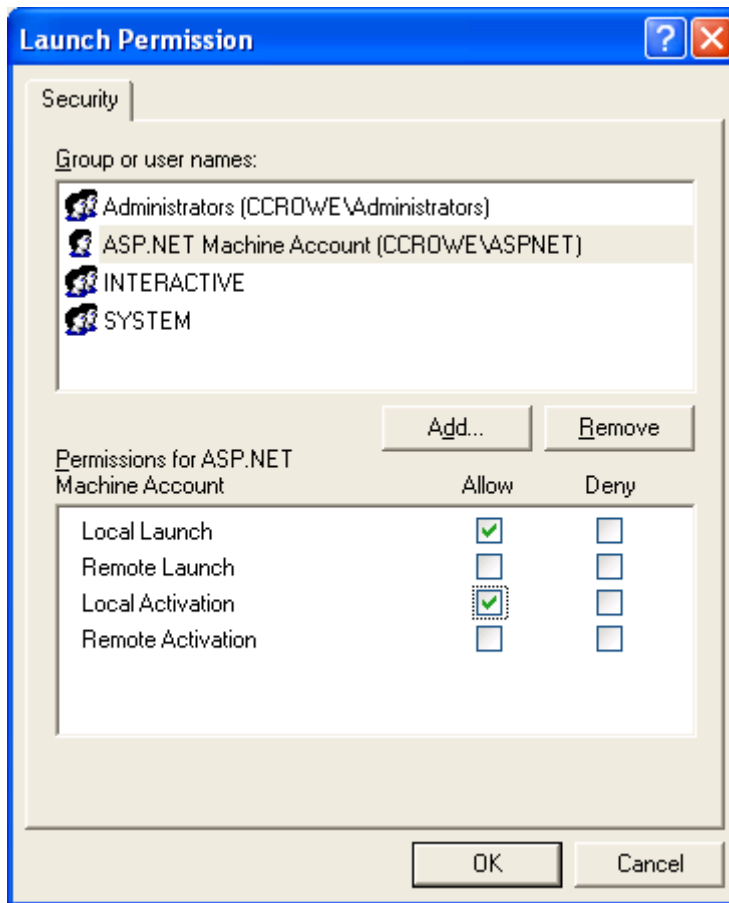


- Click the OK button

*Note: A quicker way is to just enter the computer name and the account so in my case that would be:  
ccrowe\ASPNET*

- Now make sure you select the following options for the "ASP.NET Machine Account"
  - **Local Launch** : **Allow**
  - Remote Launch : [blank]
  - **Local Activation** : **Allow**
  - Remote Activation : [blank]

These settings can be seen below:



Click the OK button and test your web application and it should work fine.